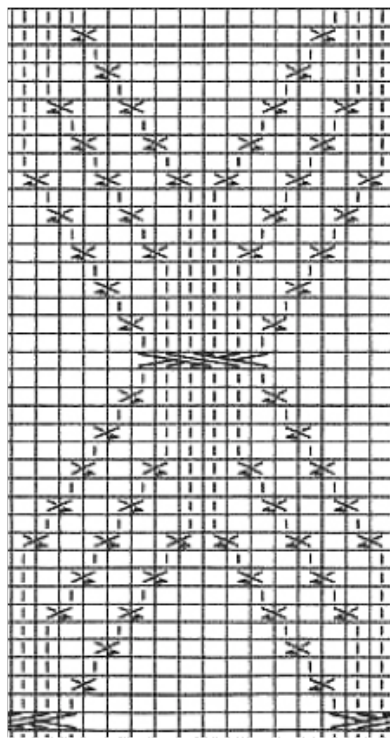
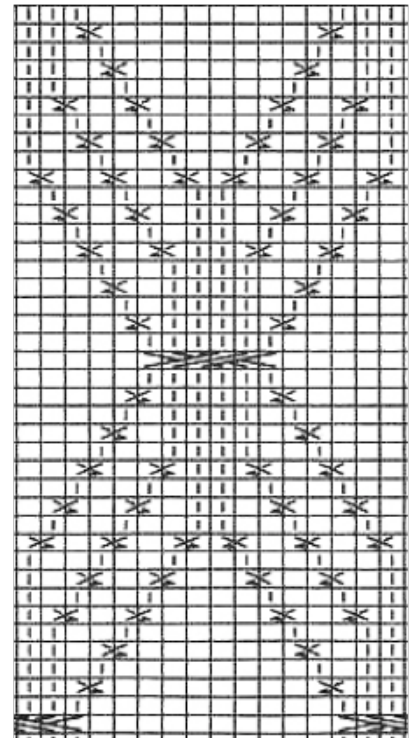


original hand knitting graph

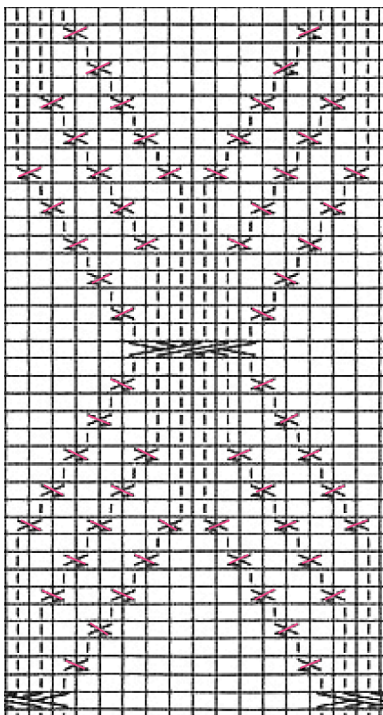


possible repeat



flipped vertically

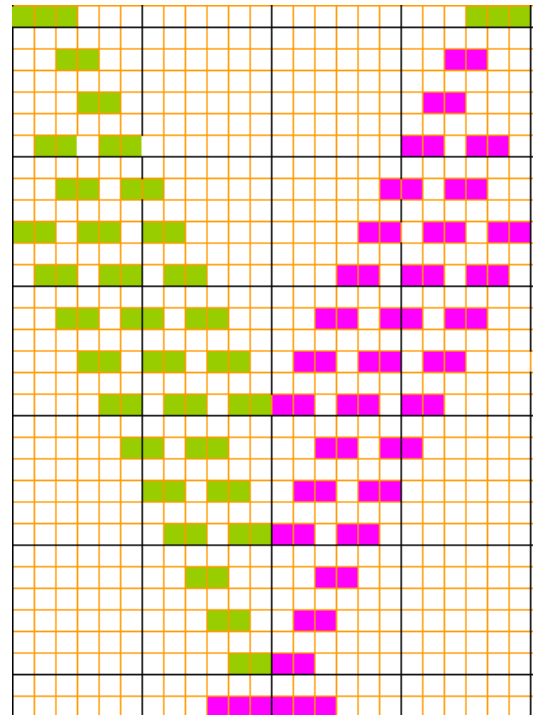
cable crossings clarified



converted to color blocks

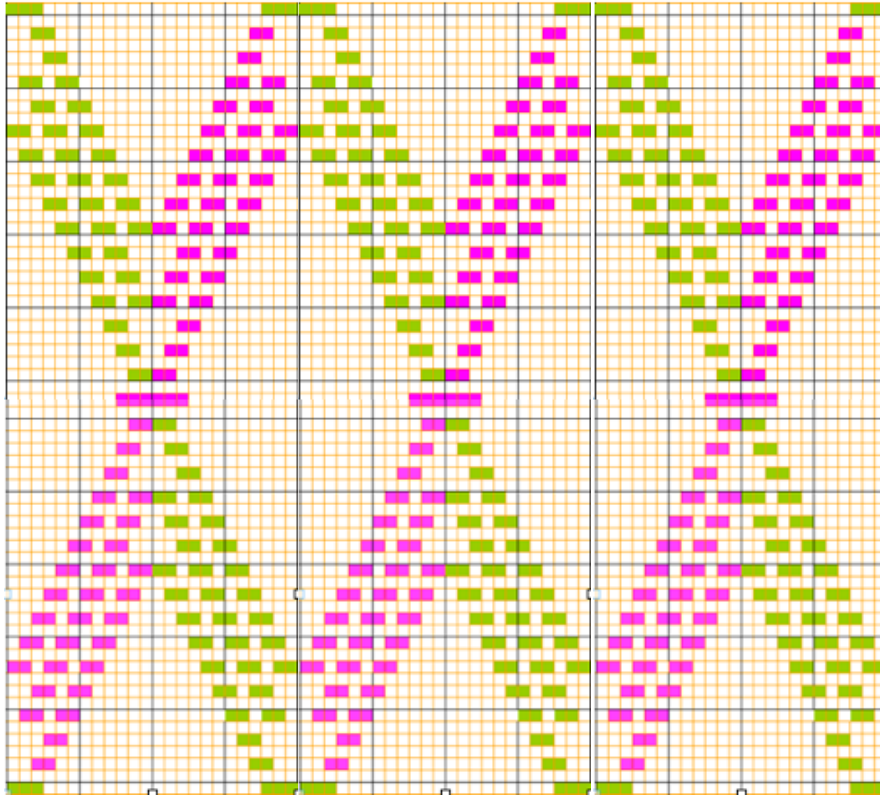


the start of a 24 stitch repeat



In the BW graphs where cable stitches are represented by solid lines and dashed lines Stitches are moved in the direction of the upward slant. The “needles” with the / solid lines will be moved first, the dashed lines follow to replace/fill the empty needles. Repeat below is 64 rows high, so if a card is used it would need to be pieced, last row on graph is not part of the repeat itself. As in easily seen in knit alphabets however, the

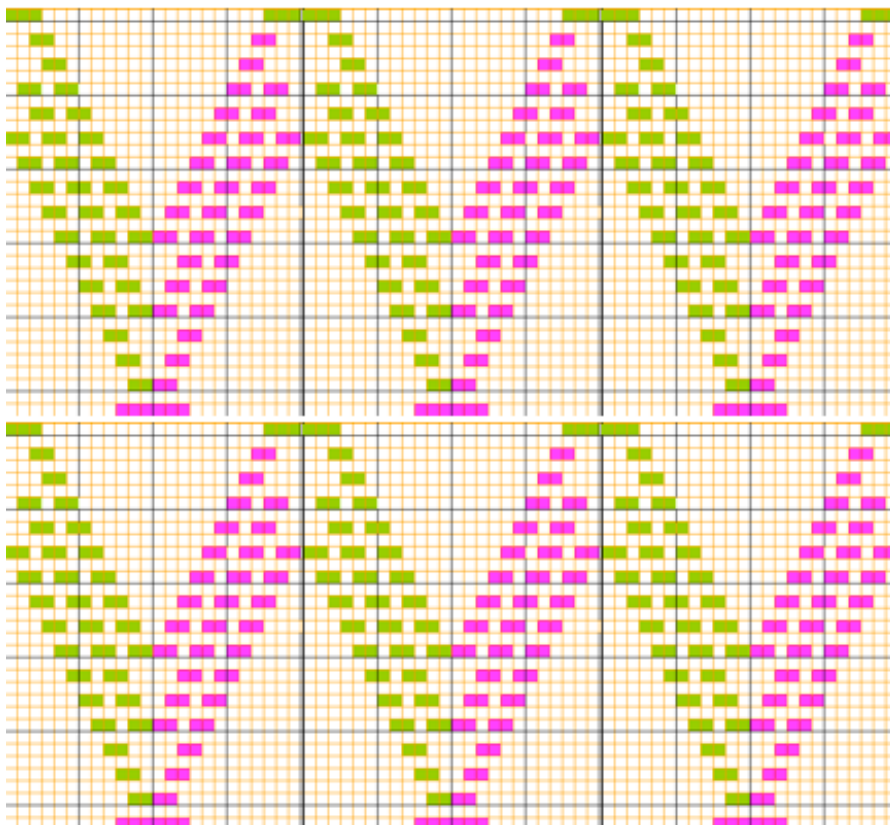
fact that punchcard patterns are flipped vertically when the design is executed needs to be kept in mind if punched holes are used to track the cable repeats, which will now match those in the hand knitting **original** graph.



Color blocks represent punched holes in card

green color blocks :
left half of crossed stitches are moved first, taken off on tool, held to side
right half of of crossed stitches follow and are placed on the empty needles on left
the first held stitches in turn are then placed on needles now empty needles on right

pink color blocks :
right half of crossed stitches are moved first, taken off on tool, held to side
left half of of crossed stitches follow and are placed on the empty needles on right
the first held stitches in turn are then placed on needles now empty on left



markings on the needle tape correspond to needle selection for 24 stitch repeat, and that can be used as guide as needles selected are intended to move toward the center of each repeat, creating the diamonds

if electronics are used and repeats are other than 24 stitches wide, needle tape may be marked with water soluble pen or removable color tape strips may be placed between the needles that are first and last in each repeat

This is a very time consuming fabric, not friendly to distractions or interruptions . It would be conceivable to create diamonds using tuck or slip stitches or even fine lace, and incorporating cables at the intersections of the lines at the tops, bottoms, and side of the resulting diamond shapes.

Below is an image of the completed card and the corresponding fabric. Any crossing mistakes were purely “operator error”. The yarn in swatch is thinner than 2/8, texture on purl side created after stitches were moved was not much of a visual aid in tracking pattern. That may be different in a bulky knit.

