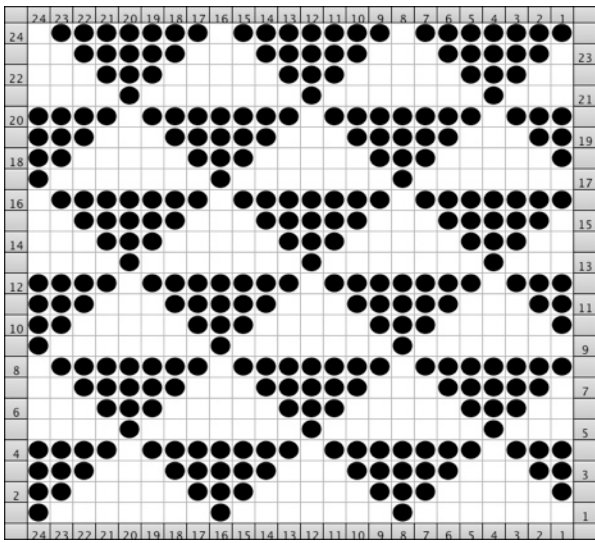


Card A use single color or as directed, B and C DBJ change colors every 2 rows

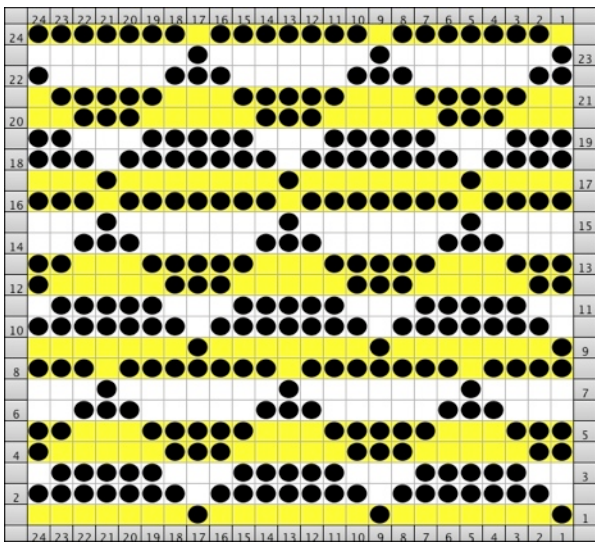


Card A
pintucks EOR (X2) KC mem <---->
part <----->
N N
part <-----> RC 8 COL 1
N N RC 2 COL 2

mosaic part <-----> RC 2 COL 1
N N RC 2 COL 2

solid back part <-----> RC 2 COL 1
N N
part <-----> RC 2 COL 2
part <----->

ER (every row rotation)- knit carefully***
nopps tuck <----->
N N



Card B ER KC mem ---->

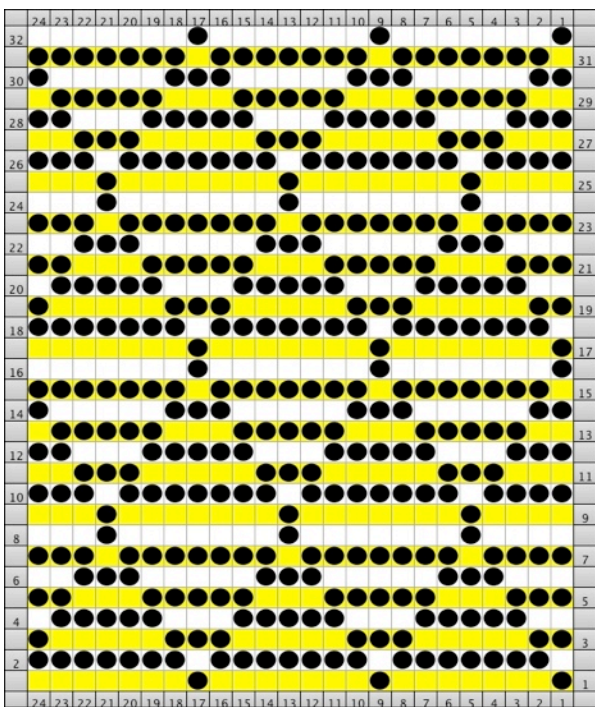
striper backing part <----->
N N

half striper backing part <----->
part <---- N

bird's eye backing part <----->
lili part <----->lili

bird's eye vertical stripe** part <----->
lili part <----->lili

tucked bird's eye part <----->
lili tuck <----->lili



Card C EOR KC mem <---->

striper backing part <----->
N N

half striper backing part <----->
part <---- N

bird's eye backing part <----->
lili part <----->lili

bird's eye vertical stripe** part <----->
lili part <----->lili

tubular part <----->
N part---->

solid backing RC2, COL1 part <----->
part <----->
RC2, COL2 part <----->
N N

tucked bird's eye part <----->
lili tuck <----->lili

tucked half milano part <---tuck--->
N N

tuck, plain combo RC2, COL1 tuck <----->
N N
RC2, COL2 Plain <----->
N N

card A

card B

card C

ELECTRONIC REPEATS

