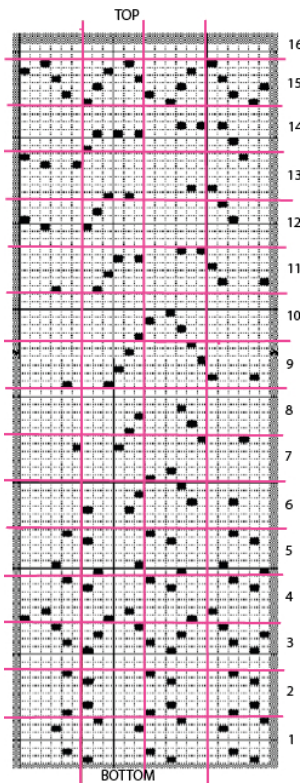


In lace knitting is that while there is often very little punching to actually do because there are so many "blank squares" I find it very easy to make errors in transcribing when working from a graph such as that provided at Staceyjoy's <http://www.redlipstick.net/knit/>, the following steps help me in the process of creating the punchcard (this card is suitable for Brother machine or clone ie. Knitking and Taitexma).

1. work with a reproduction of the graph in a size that is easy to "see" mark top and bottom clearly to avoid accidentally inverting it



2. draw lines on printed graph with colored ink to match markings on punchcard ie. on brother blank cards you will note dotted lines dividing the card into 6X6 sections: the colored lines on your printed graph will now match those dotted lines

3. beginning from bottom of card mark holes where needed, masking off subsequent horizontal blocks of pattern "squares" with paper, rulers or whatever is on hand

in this instance the card is 92 rows of pattern, 15 vertical sections of 6 rows with a bonus 2 rows at top, and 4 horizontal sections in view as you travel up the complete repeat

marking occurs while looking at only 4 blocks that are 6 stitches wide, 6 rows tall, and reference points from side and top of each block are easy to find making it possible at least for me to make fewer mistakes

4. number rows clearly and sequentially; first section is done for you through 55, continue on second section through 85 at the top (last blank row), resume numbering at bottom of first section numbering 86-92 factory numbered row 1 will be directly above 92

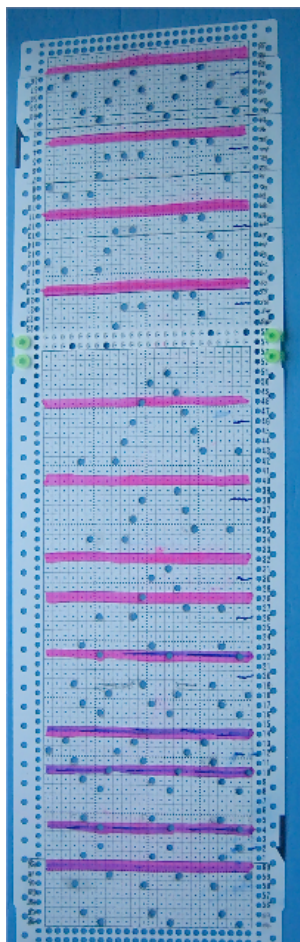
each of these numbers are visual reminders of design rows that are actually being read by the card reader 7 rows below eye level

on knit rows the carriage is not set for punchcard use (KC), so the card will not advance on those rows

I then “proofed” and marked the card bright pink on rows in which knitting occurs = no worry about arrows, etc. , when I see pink it’s time to be knitting

first row of pattern is selected with lace carriage moving from left to right, and card locked; change card to rotate, and go for it  
there is one point only in this card where two needles are left empty and selected side by side, creating larger lace holes that would stay ladders unless as occurs here, another stitch is transferred so one of those empty needles can fill in and return to “normal lace” is made

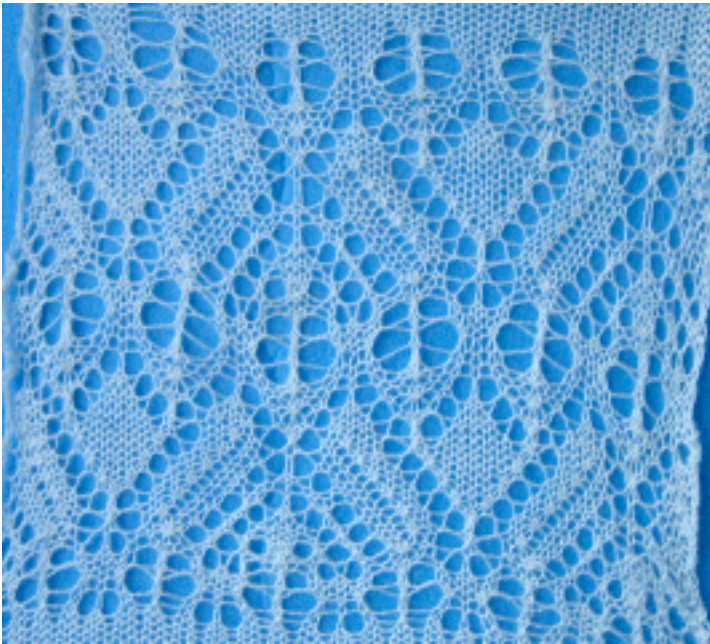
occasionally multiple stitches transfer onto a single needle, it is helpful to make certain those stitches actually knit off on the subsequent row, and a looser tension than desired may be required to facilitate this and avoid having to intervene by hand to solve the problem



Rows on which knitting occurs:

- 84
- 76
- 68
- 60
- 48
- 40
- 32
- 28
- 22
- 14
- 10
- 4
- 92 (factory marked 60)

**Purl side**



**Knit side**

